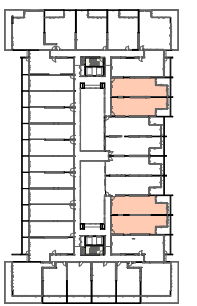
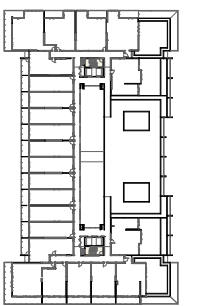


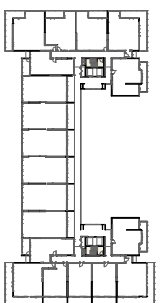
LEVEL GROUND



LEVEL 1 - 4

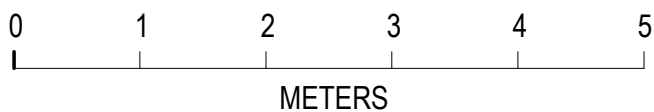


LEVEL 5



LEVEL 6

- UNIT S3-40
- UNIT S3-41
- UNIT S3-46
- UNIT S3-47
- UNIT S3-73
- UNIT S3-74
- UNIT S3-79
- UNIT S3-80
- UNIT S3-106
- UNIT S3-107
- UNIT S3-112
- UNIT S3-113
- UNIT S3-139
- UNIT S3-140
- UNIT S3-145
- UNIT S3-146
- TYPE S3-09 A: 16



UNIT TYPE S3-09A



Whilst we endeavor to ensure the contents of these plans are correct at the time of printing, the information they contain is to be used as a guide only. The columns shown on the plans may vary in diameter or shape throughout the building. Area calculation is for gross floor area and is measured to the outside face of external walls and common area walls and to the centreline of party walls and includes riser shafts and vertical service ducts. Balcony area is measured to the inside face of balustrades. Any areas, riser shafts and vertical service ducts shown are indicative only and may be varied subject to detail design and authority requirements. The plans were completed prior to completion of the final design, engineering and construction of the building. Therefore the design, engineering, dimensions, fittings, finishes and specifications are indicative only and subject to change without notice in accordance with the provisions in the Contract of Sale.

EXTERNAL 11 m²
INTERNAL 71 m²
BED BATH
2 2

